

Supplementary File

Number : 70

Title: “A Surround View Image Generation Method with Low Distortion for Vehicle Camera Systems Using a Composite Projection.”

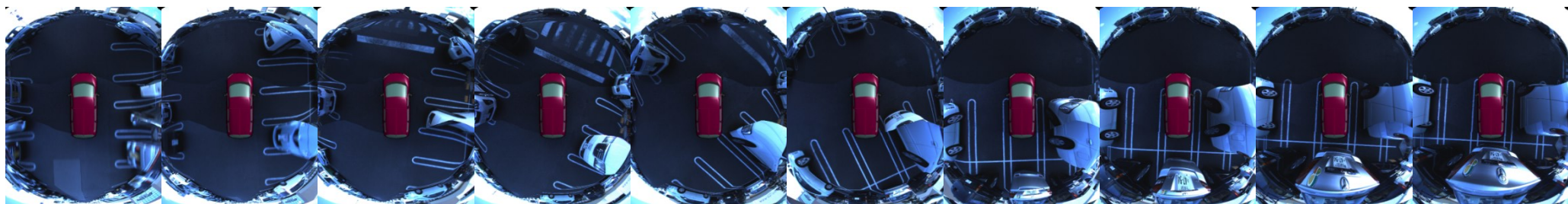


Figure A. Generated images by the proposed composite projection on the halfpipe shape model in “Side by side parking scene 1” . Total 27sec, 3 sec/frame.



Figure B. Generated images by the proposed composite projection on the halfpipe shape model in “Side by side parking scene 2” . Total 27sec, 3 sec/frame.

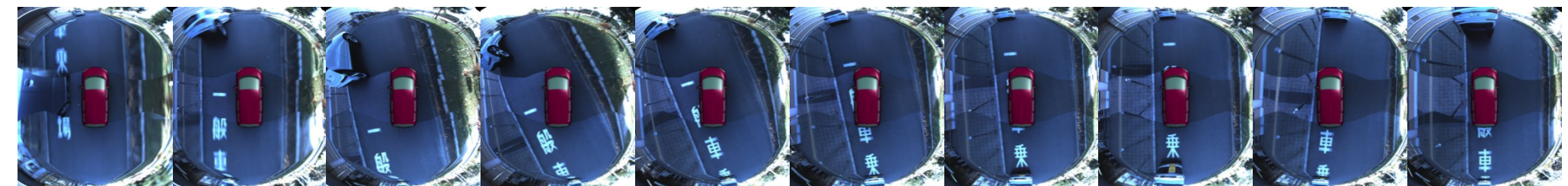


Figure C. Generated images by the proposed composite projection on the halfpipe shape model in “Paralle parking scene 1” . Total 27sec, 3 sec/frame.

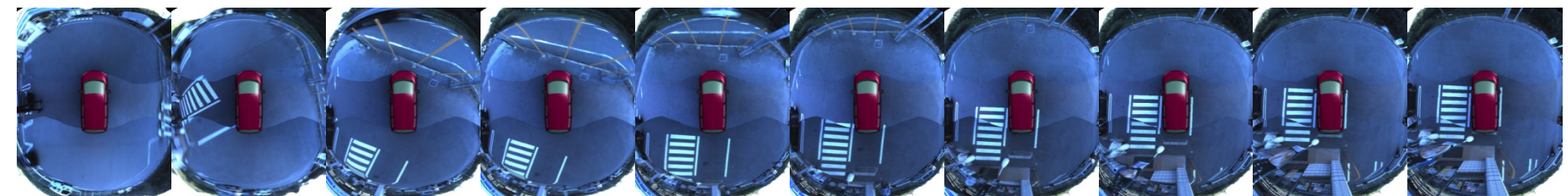


Figure D. Generated images by the proposed composite projection on the halfpipe shape model in “Side by side parking scene 3” . Total 27sec, 3 sec/frame.

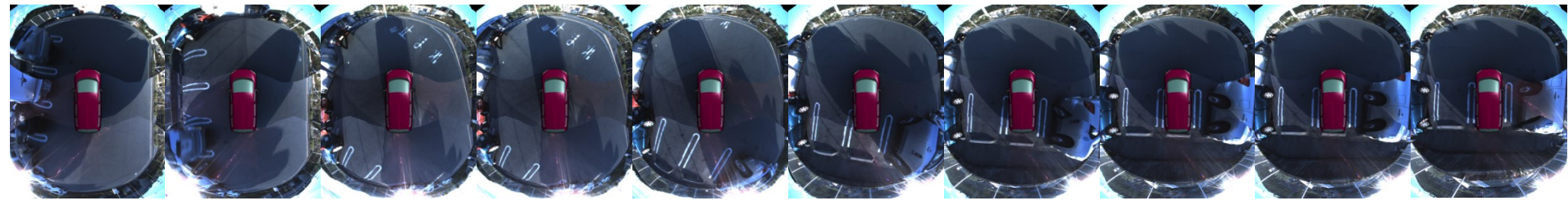


Figure F. Generated images by the proposed composite projection on the halfpipe shape model in “Side by side parking scene 4” . Total 27sec, 3 sec/frame.

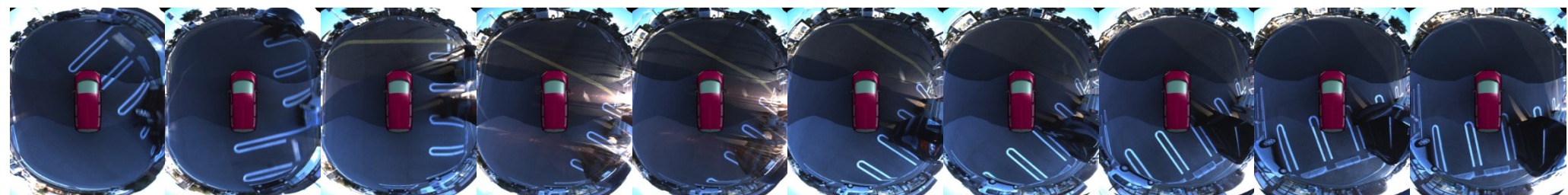


Figure G. Generated images by the proposed composite projection on the halfpipe shape model in “Side by side parking scene 5” . Total 27sec, 3 sec/frame.

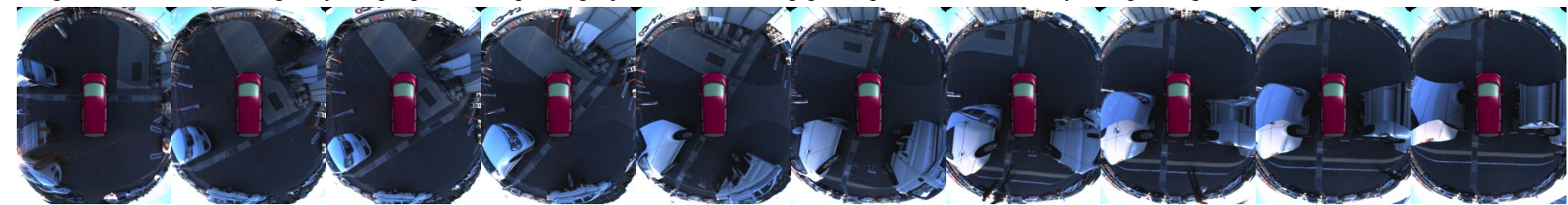
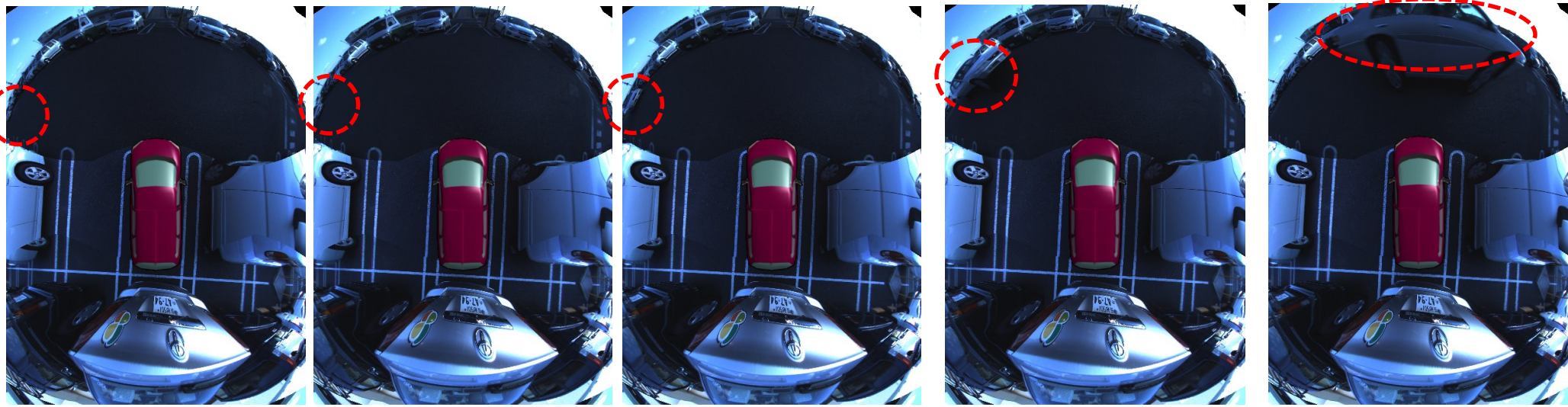


Figure H. Generated images by the proposed composite projection on the halfpipe shape model in “Side by side parking scene 6” . Total 27sec, 3 sec/frame.



Figure I. Generated images by the proposed composite projection on the halfpipe shape model in “Side by side parking scene 7” . Total 27sec, 3 sec/frame.



51 [sec.]

52 [sec.]

53 [sec.]

54 [sec.]

55 [sec.]

(a) The proposed composite projection on a halfpipe shape model.

An approaching vehicle can be seen in the images.



51 [sec.]

52 [sec.]

53 [sec.]

54 [sec.]

55 [sec.]

(b) perspective projection on a plane shape model. An approaching vehicle can only be seen in one second before passing.

Figure J. Generated images by the proposed composite projection and the conventional perspective projection in “Approaching vehicle scene” .